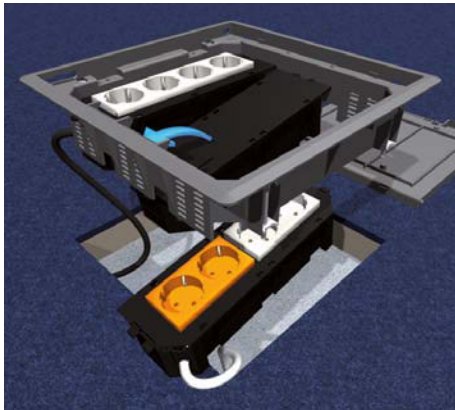


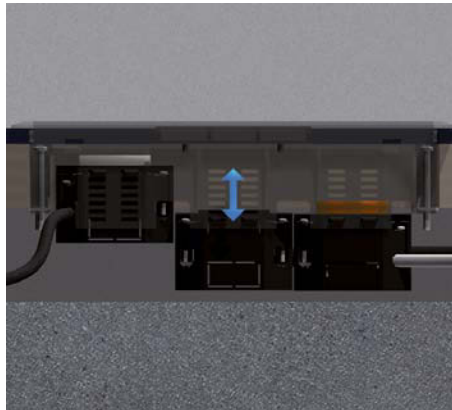
Device installation cups and installation devices

Assembly instruction



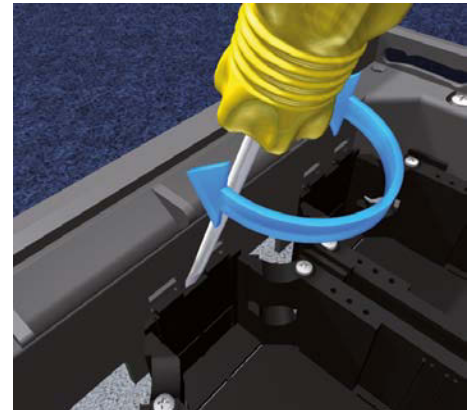
7 | Installation

Insert the device container as far as possible into the lock-in leads. Can be lowered down to 30 mm.



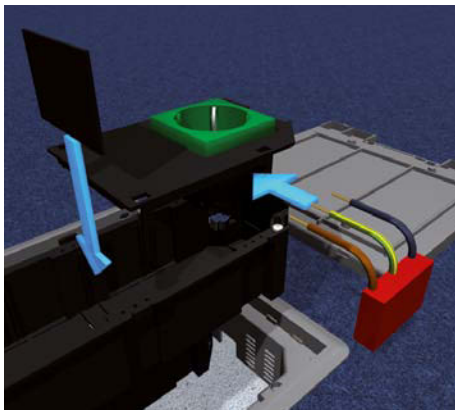
8 | Minimum / Maximum installation height

Minimum installation height 74 mm without device plugs and 88 mm for device plugs up to H = 35 mm. Maximum installation height 104 mm for device plugs up to H = 50 mm.



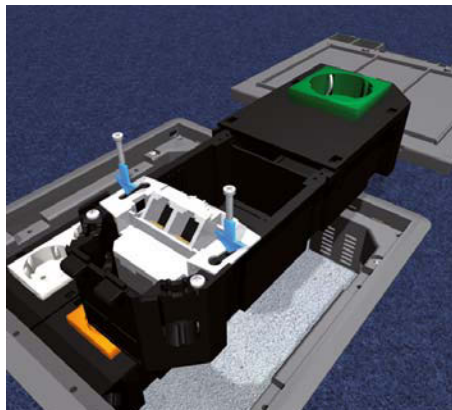
9 | Releasing device cup

Push mounting lever or screwdriver between frame and device cup. Release latches separately sideways and take out device cup.



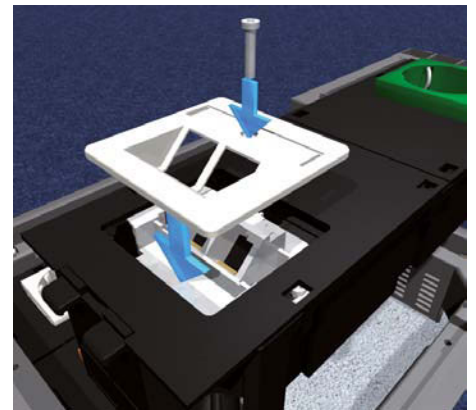
10 | Device separator

In case of different electric circuits and equipment use the device separator. Insert overvoltage protector into the push-terminals L, N and PE of the socket and complete with connecting line.



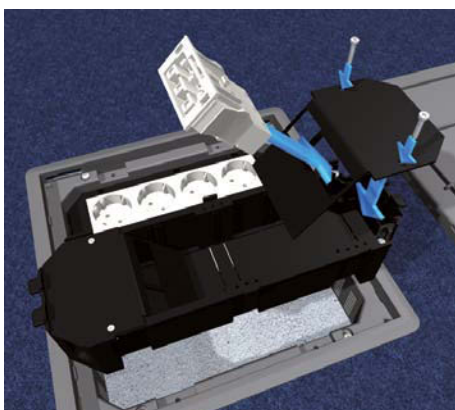
11 | Coupler clip installation devices

Lock in socket and overvoltage protector with the cover plate into the device cup. Screw installation devices with coupler clips into the device cup.



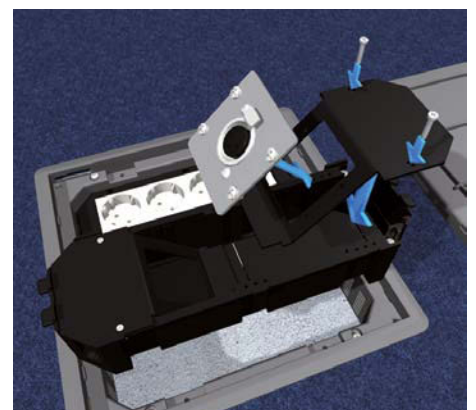
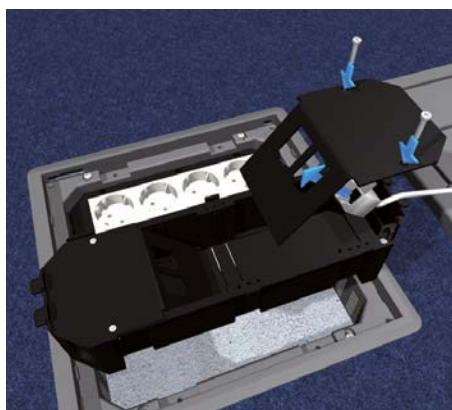
12 | Finalisation

Snap cover plates and screw cover in place. Close all openings with blind covers.



13 | Equipment of device cup

Quadrangular insert for half a device cup made of coated metal for components of data, fibre optic cable, audio and video technology, also for plug-in components and installation devices 45 x 45 mm. **Equip with up to two plug-in components according to the manufacturer's specifications and screw into the device cup.**





Errors and technical modification subject to change, reproduction as well as electronic duplication only with our written permission. With appearance of this print all preceding documents lose their validity.

